

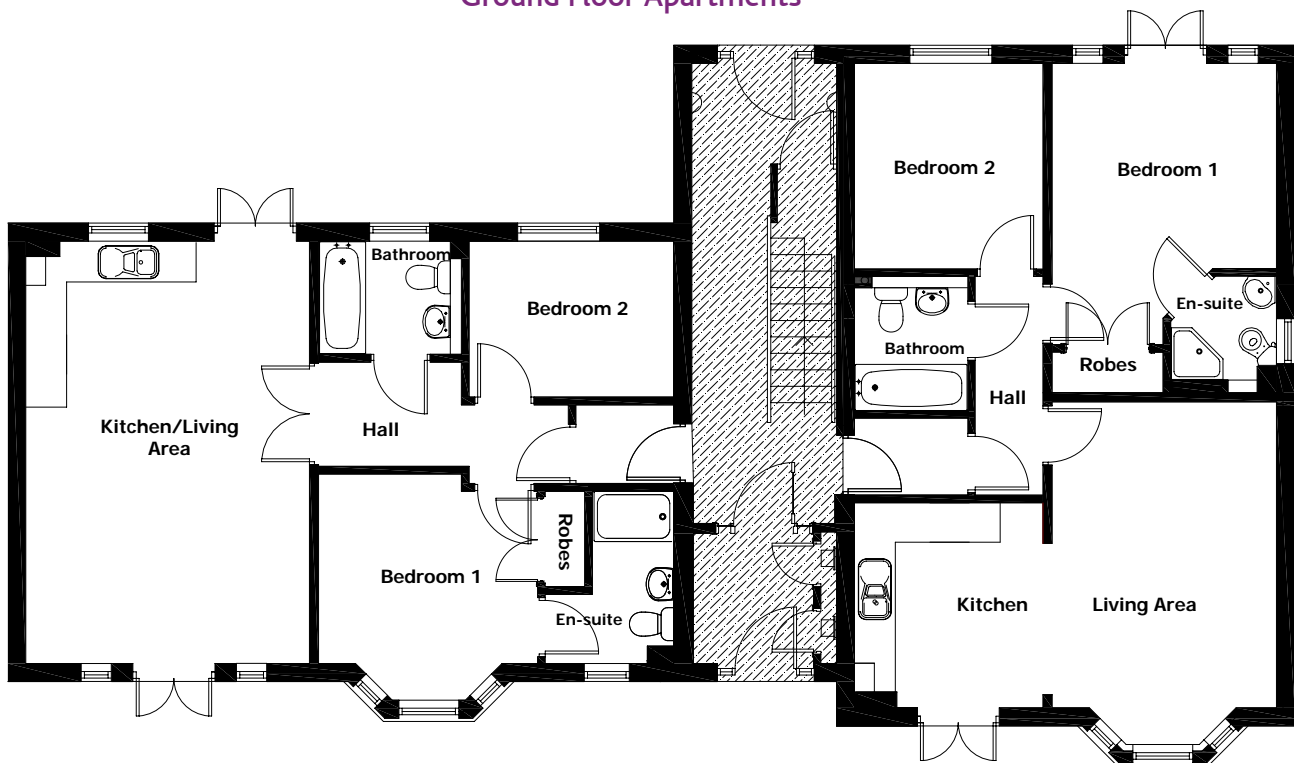
# The Regent

## 2 Bedroom Home

These fabulous two bedroom ground floor apartments incorporate many stunning features, not just the stylish kitchen and spacious open plan living area. The kitchen/living area is bathed in natural light by a set of French doors creating a light and airy space. Walk through the hall to bedroom one and you'll be impressed by the convenient en-suite with shower and built-in robes. There is also a good sized second bedroom and main bathroom.



### Ground Floor Apartments



#### Plot 105 & 406

Kitchen/Living Area	4210 x 6315	13'10" x 20'9"
Bedroom 1	3328 x 2827	10'11" x 9'3"
Bedroom 2	3060 x 2320	10'0" x 7'7"

#### Plot 106 & 407

Living Area	3310 x 4548	10'10" x 14'11"
Kitchen	2765 x 3065	9'1" x 10'1"
Bedroom 1	3310 x 4219	10'10" x 13'10"
Bedroom 2	2765 x 3070	9'1" x 10'1"

Principal dimensions are not measured into areas including (but not restricted to) bay windows, alcoves or wardrobes where applicable. The dimensions where specified are for indicative purposes only and are not intended to be relied upon for determining (without limitation) carpet sizes, appliances, spaces or items of furniture. The Company's policy is one of continuous product development and improvement, both in design and in construction. We therefore reserve the right to make amendments without notice. The photograph (which may depict individual or street scene properties) and particulars set out above are for illustrative purposes and general guidance only since items such as (without limitation) brick and tile colour, door styles and external treatments including landscaping may vary from time to time. Please ask for details of the treatments specified for individual plots. These particulars cannot be relied upon as accurately describing any of the prescribed matters specified in any order made under the Property Misdescriptions Act 1991 nor do they constitute a contract, part of a contract or a warranty.

Regent (Blaydon) February 2009 (web)

**YUILL  
HOMES**  
a touch more imagination

**Yuill Homes, Cecil M Yuill Limited, Tranquility House, Harbour Walk, Hartlepool TS24 0UX**

Tel: 01429 266620 Fax: 01429 231359 Email: [marketing@yuill.co.uk](mailto:marketing@yuill.co.uk) Website: [www.yuillhomes.co.uk](http://www.yuillhomes.co.uk)

Registered in England No. 1765648. Registered Office: Cecil M Yuill Limited, Tranquility House, Harbour Walk, Hartlepool TS24 0UX

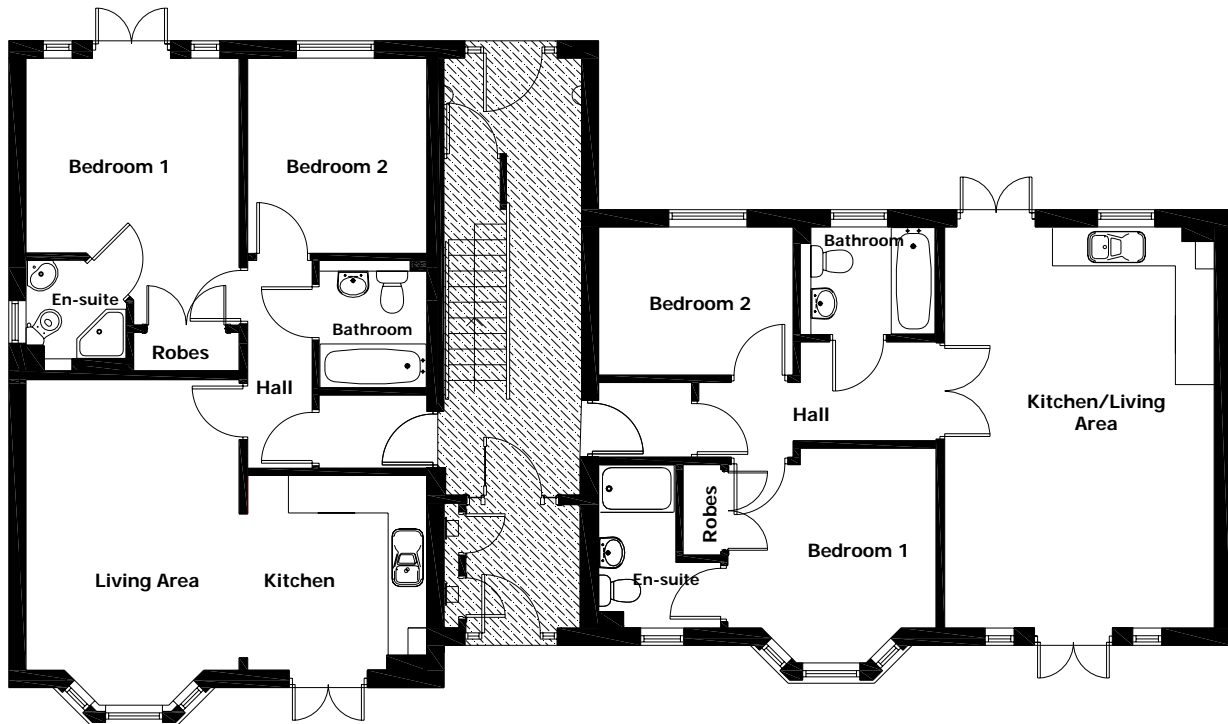
# The Regent

## 2 Bedroom Home

These fabulous two bedroom ground floor apartments incorporate many stunning features, not just the stylish kitchen and spacious open plan living area. The kitchen/living area is bathed in natural light by a set of French doors creating a light and airy space. Walk through the hall to bedroom one and you'll be impressed by the convenient en-suite with shower and built-in robes. There is also a good sized second bedroom and main bathroom.



### Ground Floor Apartments



#### Plot 92

Living Area	3310 x 4548	10'10" x 14'11"
Kitchen	2765 x 3065	9'1" x 10'1"
Bedroom 1	3310 x 4219	10'10" x 13'10"
Bedroom 2	2765 x 3070	9'1" x 10'1"

#### Plot 93

Kitchen/Living Area	4210 x 6315	13'10" x 20'9"
Bedroom 1	3328 x 2827	10'11" x 9'3"
Bedroom 2	3060 x 2320	10'0" x 7'7"

Principal dimensions are not measured into areas including (but not restricted to) bay windows, alcoves or wardrobes where applicable. The dimensions where specified are for indicative purposes only and are not intended to be relied upon for determining (without limitation) carpet sizes, appliances, spaces or items of furniture. The Company's policy is one of continuous product development and improvement, both in design and in construction. We therefore reserve the right to make amendments without notice. The photograph (which may depict individual or street scene properties) and particulars set out above are for illustrative purposes and general guidance only since items such as (without limitation) brick and tile colour, door styles and external treatments including landscaping may vary from time to time. Please ask for details of the treatments specified for individual plots. These particulars cannot be relied upon as accurately describing any of the prescribed matters specified in any order made under the Property Misdescriptions Act 1991 nor do they constitute a contract, part of a contract or a warranty.

Regent (Blaydon) February 2009 (web)

**YUILL  
HOMES**  
a touch more imagination

**Yuill Homes, Cecil M Yuill Limited, Tranquility House, Harbour Walk, Hartlepool TS24 0UX**

Tel: 01429 266620 Fax: 01429 231359 Email: [marketing@yuill.co.uk](mailto:marketing@yuill.co.uk) Website: [www.yuillhomes.co.uk](http://www.yuillhomes.co.uk)

Registered in England No. 1765648. Registered Office: Cecil M Yuill Limited, Tranquility House, Harbour Walk, Hartlepool TS24 0UX

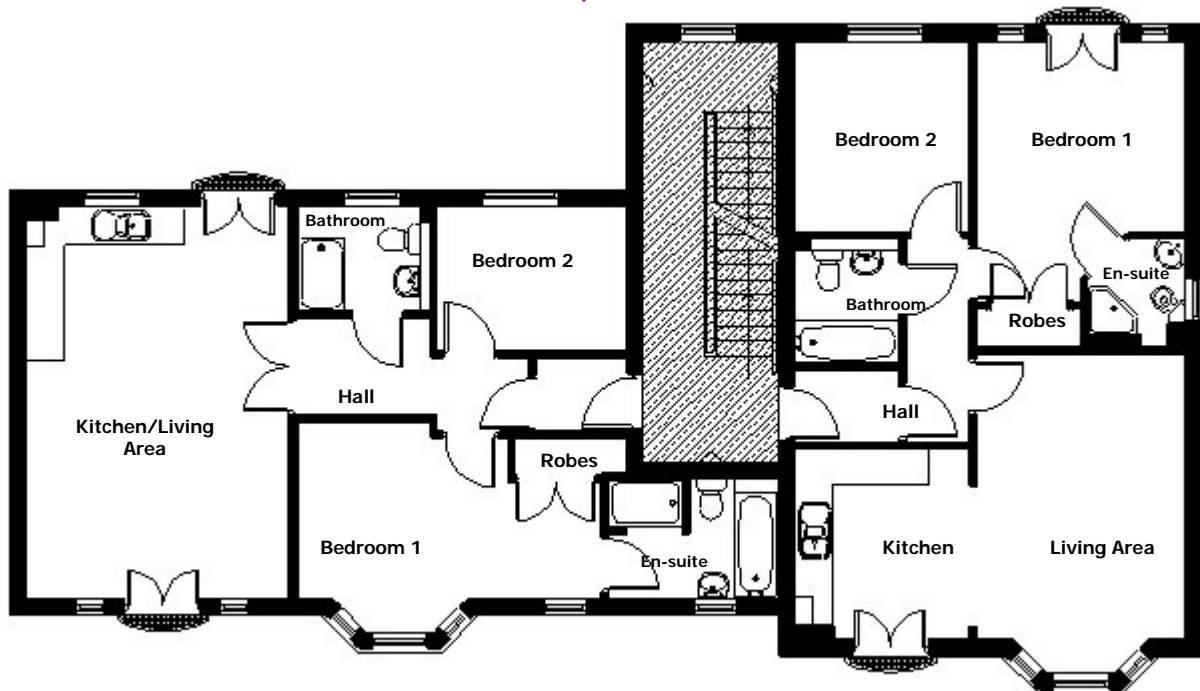
# The Regent

## 2 Bedroom Home

These fabulous two bedroom first floor apartments incorporate many stunning features, not just the stylish kitchen and spacious open plan living area. A set of French doors with an elegant faux balcony bathe the kitchen/living area in natural light. Walk through to bedroom one and you'll be impressed by the convenient en-suite with shower and bath in some instances, plus built-in robes. There is also a good sized second bedroom and main bathroom.



### First Floor Apartments



#### Plot 107 & 408

Kitchen/Living Area	4210 x 6315	13'10" x 20'9"
Bedroom 1	4932 x 2827	16'2" x 9'3"
Bedroom 2	3060 x 2320	10'0" x 7'7"

#### Plot 108 & 409

Living Area	3310 x 4548	10'10" x 14'11"
Kitchen	2765 x 3065	9'1" x 10'1"
Bedroom 1	3310 x 4219	10'10" x 13'10"
Bedroom 2	2765 x 3070	9'1" x 10'1"

Principal dimensions are not measured into areas including (but not restricted to) bay windows, alcoves or wardrobes where applicable. The dimensions where specified are for indicative purposes only and are not intended to be relied upon for determining (without limitation) carpet sizes, appliances, spaces or items of furniture. The Company's policy is one of continuous product development and improvement, both in design and in construction. We therefore reserve the right to make amendments without notice. The photograph (which may depict individual or street scene properties) and particulars set out above are for illustrative purposes and general guidance only since items such as (without limitation) brick and tile colour, door styles and external treatments including landscaping may vary from time to time. Please ask for details of the treatments specified for individual plots. These particulars cannot be relied upon as accurately describing any of the prescribed matters specified in any order made under the Property Misdescriptions Act 1991 nor do they constitute a contract, part of a contract or a warranty.

Regent (Blaydon) February 2009 (web)

**YUILL  
HOMES**  
a touch more imagination

**Yuill Homes, Cecil M Yuill Limited, Tranquility House, Harbour Walk, Hartlepool TS24 0UX**

Tel: 01429 266620 Fax: 01429 231359 Email: [marketing@yuill.co.uk](mailto:marketing@yuill.co.uk) Website: [www.yuillhomes.co.uk](http://www.yuillhomes.co.uk)

Registered in England No. 1765648. Registered Office: Cecil M Yuill Limited, Tranquility House, Harbour Walk, Hartlepool TS24 0UX

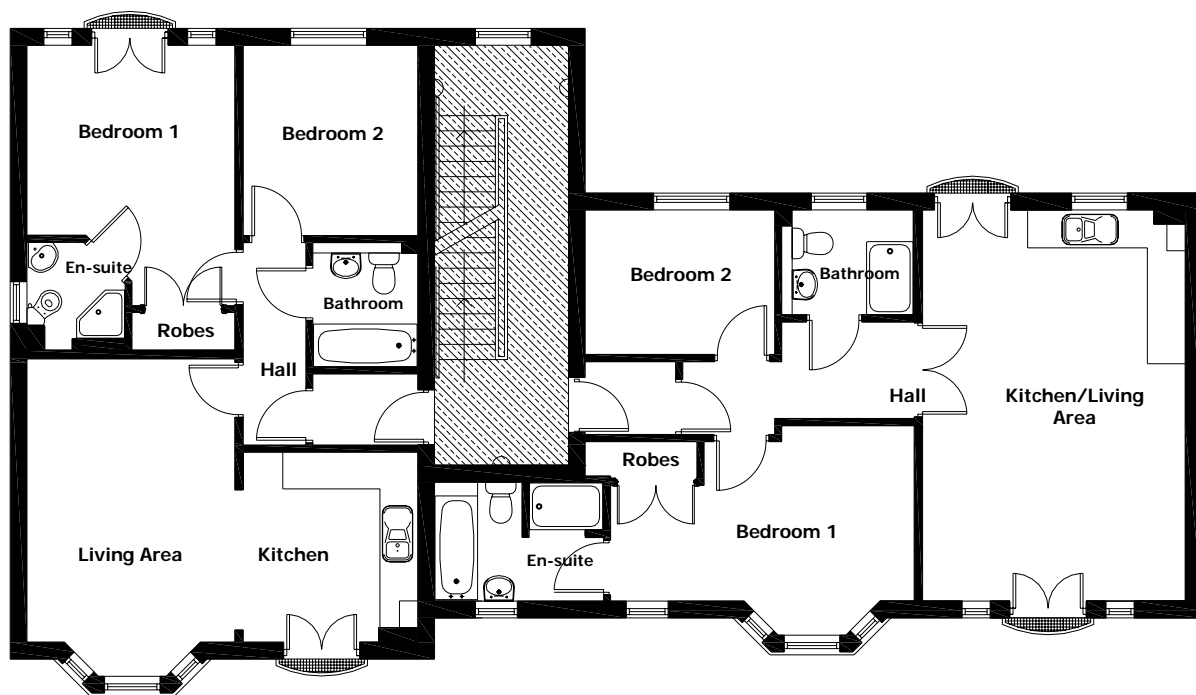
# The Regent

## 2 Bedroom Home

These fabulous two bedroom first floor apartments incorporate many stunning features, not just the stylish kitchen and spacious open plan living area. A set of French doors with an elegant faux balcony bathe the kitchen/living area in natural light. Walk through to bedroom one and you'll be impressed by the convenient en-suite with shower and bath in some instances, plus built-in robes. There is also a good sized second bedroom and main bathroom.



### First Floor Apartments



#### Plot 94

Living Area	3310 x 4548	10'10" x 14'11"
Kitchen	2765 x 3065	9'1" x 10'1"
Bedroom 1	3310 x 4219	10'10" x 13'10"
Bedroom 2	2765 x 3070	9'1" x 10'1"

#### Plot 95

Kitchen/Living Area	4210 x 6315	13'10" x 20'9"
Bedroom 1	4932 x 2827	16'2" x 9'3"
Bedroom 2	3060 x 2320	10'0" x 7'7"

Principal dimensions are not measured into areas including (but not restricted to) bay windows, alcoves or wardrobes where applicable. The dimensions where specified are for indicative purposes only and are not intended to be relied upon for determining (without limitation) carpet sizes, appliances, spaces or items of furniture. The Company's policy is one of continuous product development and improvement, both in design and in construction. We therefore reserve the right to make amendments without notice. The photograph (which may depict individual or street scene properties) and particulars set out above are for illustrative purposes and general guidance only since items such as (without limitation) brick and tile colour, door styles and external treatments including landscaping may vary from time to time. Please ask for details of the treatments specified for individual plots. These particulars cannot be relied upon as accurately describing any of the prescribed matters specified in any order made under the Property Misdescriptions Act 1991 nor do they constitute a contract, part of a contract or a warranty.

Regent (Blaydon) February 2009 (web)

**YUILL  
HOMES**  
a touch more imagination

**Yuill Homes, Cecil M Yuill Limited, Tranquility House, Harbour Walk, Hartlepool TS24 0UX**

Tel: 01429 266620 Fax: 01429 231359 Email: [marketing@yuill.co.uk](mailto:marketing@yuill.co.uk) Website: [www.yuillhomes.co.uk](http://www.yuillhomes.co.uk)

Registered in England No. 1765648. Registered Office: Cecil M Yuill Limited, Tranquility House, Harbour Walk, Hartlepool TS24 0UX

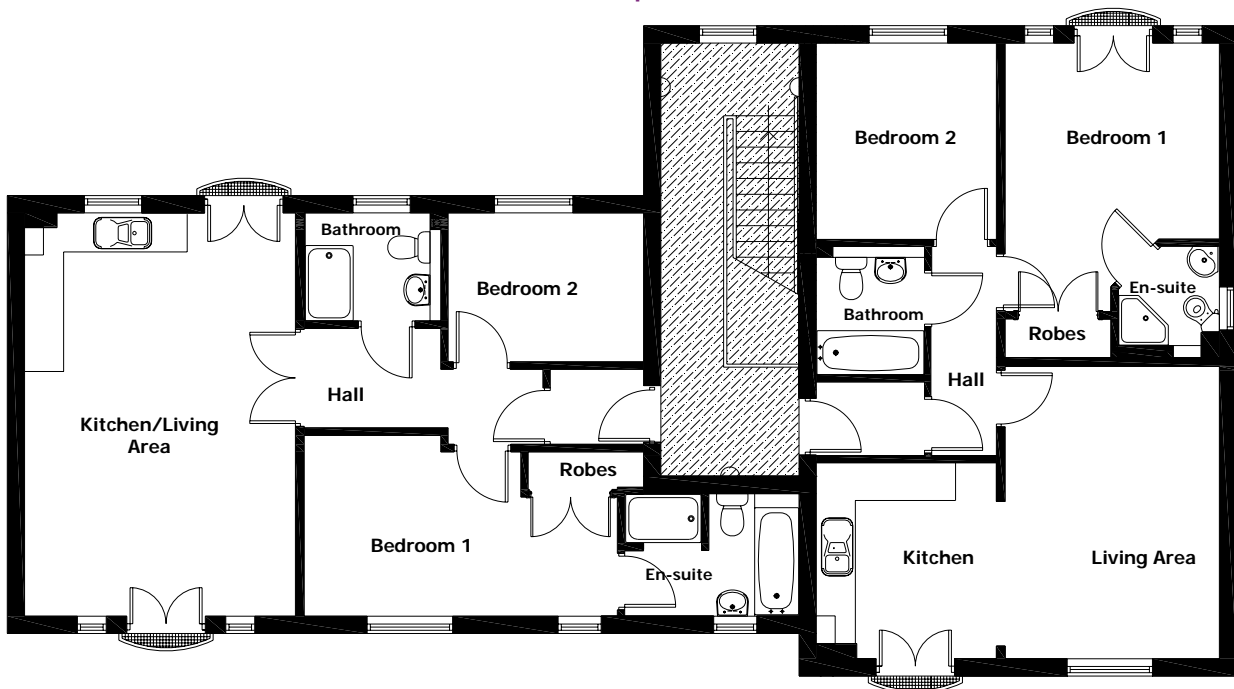
# The Regent

## 2 Bedroom Home

These fabulous two bedroom second floor apartments incorporate many stunning features, not just the stylish kitchen and spacious open plan living area. A set of French doors with an elegant faux balcony bathe the kitchen/living area in natural light. Walk through the hall to bedroom one and you'll be impressed by the convenient ensuite with shower and bath in some instances, plus built-in robes. There is also a good sized second bedroom and main bathroom.



### Second Floor Apartments



#### Plot 109 & 410

Kitchen/Living Area	4210 x 6315	13'10" x 20'9"
Bedroom 1	4932 x 2827	16'2" x 9'3"
Bedroom 2	3060 x 2320	10'0" x 7'7"

#### Plot 110 & 411

Living Area	3310 x 4548	10'10" x 14'11"
Kitchen	2765 x 3065	9'1" x 10'1"
Bedroom 1	3310 x 4219	10'10" x 13'10"
Bedroom 2	2765 x 3070	9'1" x 10'1"

Principal dimensions are not measured into areas including (but not restricted to) bay windows, alcoves or wardrobes where applicable. The dimensions where specified are for indicative purposes only and are not intended to be relied upon for determining (without limitation) carpet sizes, appliances, spaces or items of furniture. The Company's policy is one of continuous product development and improvement, both in design and in construction. We therefore reserve the right to make amendments without notice. The photograph (which may depict individual or street scene properties) and particulars set out above are for illustrative purposes and general guidance only since items such as (without limitation) brick and tile colour, door styles and external treatments including landscaping may vary from time to time. Please ask for details of the treatments specified for individual plots. These particulars cannot be relied upon as accurately describing any of the prescribed matters specified in any order made under the Property Misdescriptions Act 1991 nor do they constitute a contract, part of a contract or a warranty.

Regent (Blaydon) February 2009 (web)

**YUILL  
HOMES**  
a touch more imagination

**Yuill Homes, Cecil M Yuill Limited, Tranquility House, Harbour Walk, Hartlepool TS24 0UX**

Tel: 01429 266620 Fax: 01429 231359 Email: [marketing@yuill.co.uk](mailto:marketing@yuill.co.uk) Website: [www.yuillhomes.co.uk](http://www.yuillhomes.co.uk)

Registered in England No. 1765648. Registered Office: Cecil M Yuill Limited, Tranquility House, Harbour Walk, Hartlepool TS24 0UX

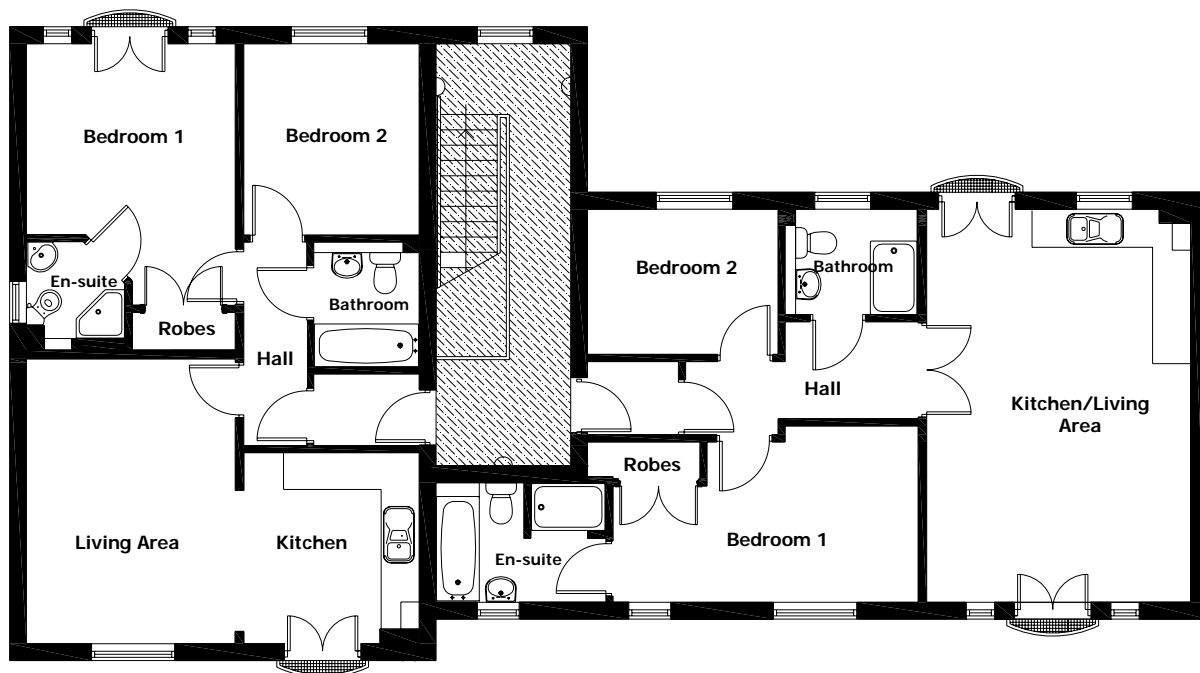
# The Regent

## 2 Bedroom Home

These fabulous two bedroom second floor apartments incorporate many stunning features, not just the stylish kitchen and spacious open plan living area. A set of French doors with an elegant faux balcony bathe the kitchen/living area in natural light. Walk through the hall to bedroom one and you'll be impressed by the convenient ensuite with shower and bath in some instances, plus built-in robes. There is also a good sized second bedroom and main bathroom.



### Second Floor Apartments



#### Plot 96

Living Area	3310 x 4548	10'10" x 14'11"
Kitchen	2765 x 3065	9'1" x 10'1"
Bedroom 1	3310 x 4219	10'10" x 13'10"
Bedroom 2	2765 x 3070	9'1" x 10'1"

#### Plot 97

Kitchen/Living Area	4210 x 6315	13'10" x 20'9"
Bedroom 1	4932 x 2827	16'2" x 9'3"
Bedroom 2	3060 x 2320	10'0" x 7'7"

Principal dimensions are not measured into areas including (but not restricted to) bay windows, alcoves or wardrobes where applicable. The dimensions where specified are for indicative purposes only and are not intended to be relied upon for determining (without limitation) carpet sizes, appliances, spaces or items of furniture. The Company's policy is one of continuous product development and improvement, both in design and in construction. We therefore reserve the right to make amendments without notice. The photograph (which may depict individual or street scene properties) and particulars set out above are for illustrative purposes and general guidance only since items such as (without limitation) brick and tile colour, door styles and external treatments including landscaping may vary from time to time. Please ask for details of the treatments specified for individual plots. These particulars cannot be relied upon as accurately describing any of the prescribed matters specified in any order made under the Property Misdescriptions Act 1991 nor do they constitute a contract, part of a contract or a warranty.

Regent (Blaydon) February 2009 (web)

**YUILL  
HOMES**  
a touch more imagination

**Yuill Homes, Cecil M Yuill Limited, Tranquility House, Harbour Walk, Hartlepool TS24 0UX**

Tel: 01429 266620 Fax: 01429 231359 Email: [marketing@yuill.co.uk](mailto:marketing@yuill.co.uk) Website: [www.yuillhomes.co.uk](http://www.yuillhomes.co.uk)

Registered in England No. 1765648. Registered Office: Cecil M Yuill Limited, Tranquility House, Harbour Walk, Hartlepool TS24 0UX