



Presented By : Downen Hartlepool : To View Telephone 01429-860806

EAMONT GARDENS : PARK ROAD



4 BEDROOM TERRACED HOUSE OFFERS AROUND £ 124,950

INCREDIBLE VALUE FOR MONEY!! SELLING ON BEHALF OF A BUILDER!! We offer for sale this immaculate four bedroom bay fronted terraced house situated in a very desirable location. Eamont Gardens is situated off Park Road being within strolling distance to the Town Centre which offers a wide range of amenities This amazing family home just simply must be viewed having very little to do but move your furniture in. The home itself comprises from, entrance vestibule, hallway, light and airy lounge with attractive fireplace, sitting room overlooking rear garden, very handy breakfast room, quality fitted kitchen and useful utility room. First floor, half landing, stunning four piece bathroom, landing, three bedrooms, second floor, bedroom 4. Externally there is a palisade whilst to the rear there is a fully enclosed garden. NO CHAIN INVOLVED!!

ENTRANCE VESTIBULE

Entered via uPVC door, dado rail, corniced & textured ceiling.

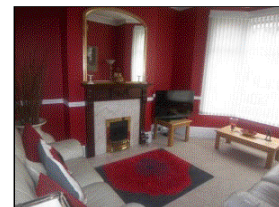
ENTRANCE HALLWAY

With spindled staircase to first floor, single central heating radiator, dado rail, corniced ceiling, useful understair storage cupboard.

LOUNGE

14' 11" x 12' 08"

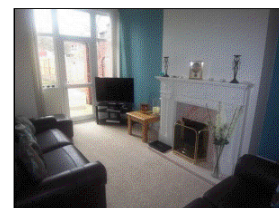
With double glazed bay window to front, corniced ceiling and decorative ceiling rose, central heating radiator, attractive feature mahogany fire surround with marble effect hearth & insert housing a living flame gas fire.



SITTING ROOM

16' 01" x 10' 06"

With corniced ceiling, attractive white Adam style fire surround with marble effect hearth & insert housing a living flame gas fire, uPVC external door, double central heating radiator.



BREAKFAST ROOM

13' 01" x 18' 11"

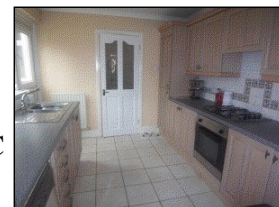
With double glazed window to side, double central heating radiator, coved ceiling, picture rail.



KITCHEN

9' 00" x 10' 09"

Fitted with a excellent range of wall and base units having contrasting work surfaces incorporating a stainless steel sink unit with mixer tap and drainer, splashback tiling, double glazed window to side, uPVC external door, single central heating radiator, ceramic tile flooring, built-in oven, gas hob, extractor hood, intergrated fridge & freezer.



UTILITY ROOM

8' 09" x 6' 11"

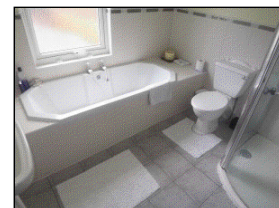
With double glazed window to side, double glazed French doors to rear, heat resisting work surface, wall and base units, splashback tiling.

FIRST FLOOR HALF LANDING

With double glazed bay window to side, bay window.

BATHROOM

Fitted with a white four-piece suite comprising tiled bath, pedestal wash hand basin, low-level w.c., walk in shower cubicle, chrome heated towel rail, ceramic tile flooring, part tile walls, double glazed frosted window to rear.



FIRST FLOOR LANDING

With staircase leading to attic/bedroom 4.

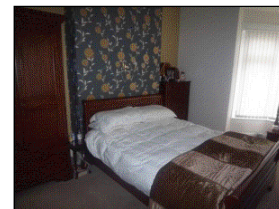
WE CANNOT VERIFY THE CONDITIONS OF ANY SERVICES, FIXTURES, FITTINGS ETC AS NONE WERE CHECKED. ALL MEASUREMENTS APPROXIMATE.

YOUR HOME IS AT RISK IF YOU DO NOT KEEP UP THE REPAYMENTS ON ANY MORTGAGE OR LOAN SECURED ON IT.

DOWEN HARTLEPOOL - REF. 12415

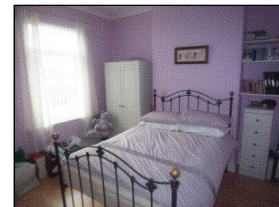
BEDROOM 1
14' 10" x 10' 08"

With double glazed bay window to front, single central heating radiator, coved ceiling.



BEDROOM 2
11' 06" x 11' 08"

With double glazed window to rear, single central heating radiator, laminate flooring, coved ceiling.



BEDROOM 3
6' 11" x 10' 11"

With double glazed window to front, single central heating radiator, coved ceiling.

SECOND FLOOR LANDING

With double glazed velux window to rear.

BEDROOM 4
12' 04" x 12' 06"

With huge storage to eaves, double glazed velux window, double central heating radiator.

EXTERNALLY

To the front of the property there is a block paved palisade whilst to the rear of the property there is a fully enclosed garden which is laid to lawn, gated access to front.