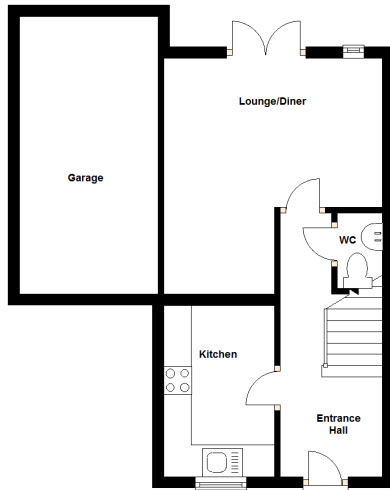




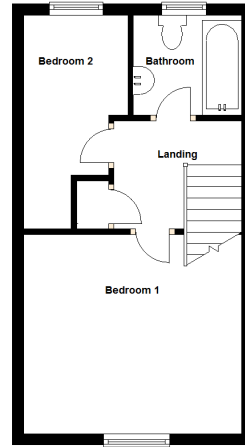
Bluebell Close, Leadgate, Consett, County Durham Offers Over **£80,000**

*** REDUCED FROM £89,950*** OPEN OUTLOOK TO FRONT. This modern two bedroom semi detached house is located at the entrance to this popular cul de sac of similar style properties. The living accommodation briefly comprises, entrance hallway, fitted kitchen, , cloakroom/WC, lounge/dining room with french doors to the rear garden, landing, two bedrooms and bathroom/WC. Externally there are lawned gardens to front and rear and gravelled driveway to the single garage. Gas central heating system, UPVC double glazing. Offered to the market with no forward chain.

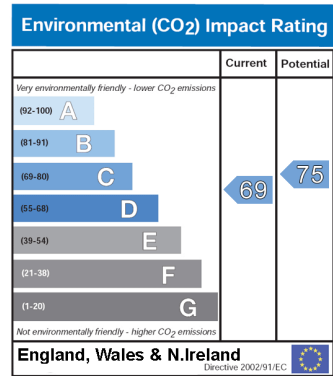
Ground Floor



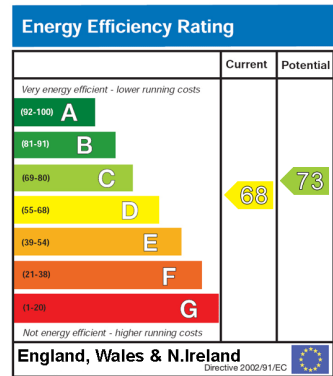
First Floor



- **Entrance Hall**
4.66m x 1.81m
- **Kitchen**
3.01m x 1.96m
- **Cloakroom/WC**
1.45m x .87m
- **Lounge/Dining Room**
3.87m x 2.65m - L Shape 1.97m x 1.63m
- **Landing**
- **Bedroom 1**
3.84m x 3.54m inc bulkhead.
- **Bedroom 2**
3.81m x 2.03m
- **Bathroom/WC**
1.92m x 1.77m
- **Front Garden**
- **Rear Garden**
- **Single Garage**
- **Floorplans**



The environmental impact rating is a measure of a home's impact on the environment in terms of carbon dioxide emissions. The higher the rating the less impact it has on the environment.



The energy efficiency rating is a measure of the overall efficiency of a home. The higher the rating the more energy efficient the home is and the lower the fuel bills will be.

Mortgage & Financial Advice - Our team of highly qualified Mortgage & Financial Consultants can provide you with up to the minute information on many of the rates available. To arrange an appointment, telephone this office. **YOUR HOME MAY BE REPOSSESSED IF YOU DO NOT KEEP UP REPAYMENTS ON YOUR MORTGAGE.** **Fixtures & Fittings** - Fixtures and fittings other than those mentioned above to be agreed with the Seller. **All Measurements** - All Measurements are Approximate. **Laser Tape Clause** - All measurements have been taken using a laser tape measure and therefore, may be subject to a small margin of error. **Floorplan Clause** - Measurements are approximate. Not to Scale. For Illustrative purposes only
Your Move Chris Stonock is the trading name of Chris Stonock Limited, registered company number 6248009, registered office 53 Front Street, Chester Le Street, DH3 3BH. Your Move Chris Stonock is an independently owned and operated business, operated under licence from your-move.co.uk Limited